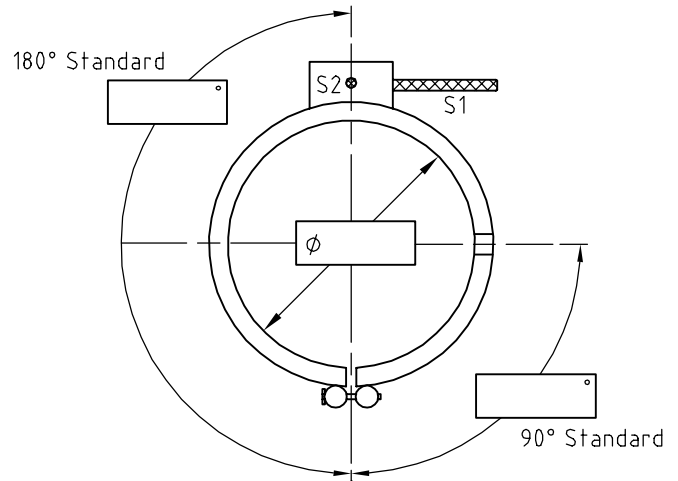
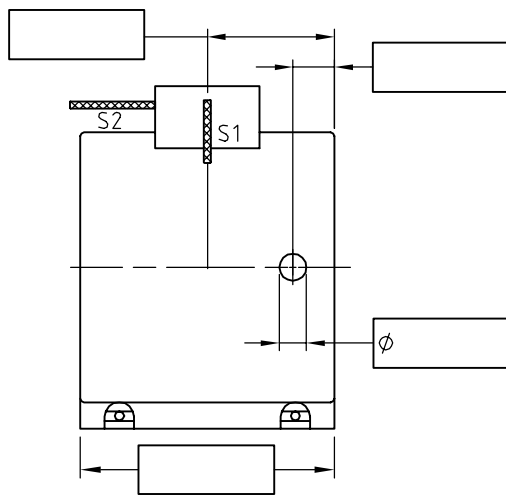
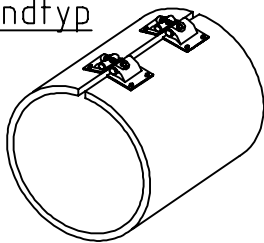


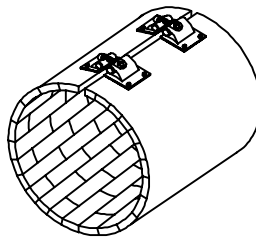
Aufnahmeblatt für Zylinderheizbänder



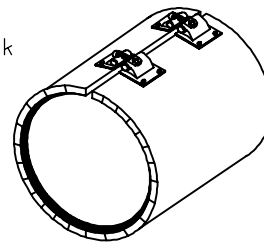
Bandtyp



Glimmer

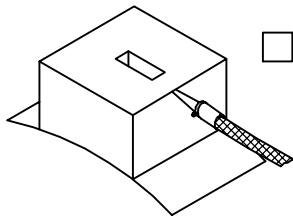


Keramik

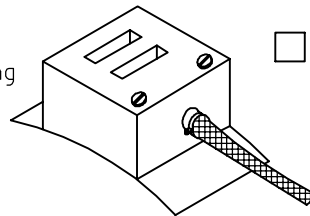


Glimmer mit
wärmeabweisendem
Gehäuse

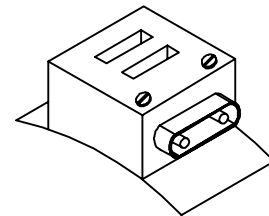
Anschlusstyp



Kleine Haube mit
Flechtungsausgang
(Standard)

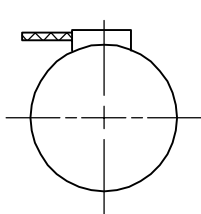


Große
verarbeitbare
Haube

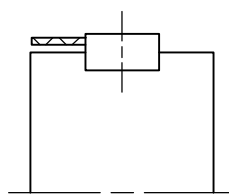


Buchse

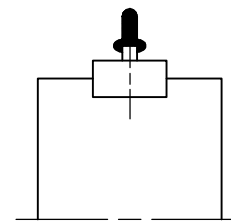
Richtung



tangential (S1)
(Standard)



axial (S2)



radial

ALLGEMEINE ANGABEN

Leistung: _____ W
Spannung: _____ V (230V Standard)
Kabellänge: _____ M (0,5m Standard)

Marke der Maschine: _____
Modell: _____
Ref. Hersteller: _____

Menge: _____
Name: _____
Firmenbezeichnung: _____
Telefon: _____
Adresse: _____

Funktion: _____

Fax: _____ E-mail: _____